



PORTE ESTERNE

Puertas Exteriores
Outer Doors
Aussentüren
Portes Extérieures

cerniere e attacchi sopraluce / hinges and patch fittings

serie Maxima

finiture / colors 31-32-60-62

Alluminio / Aluminium



1010

Alluminio / Aluminium



1011

Alluminio / Aluminium



1012

Alluminio / Aluminium



1020

Alluminio / Aluminium



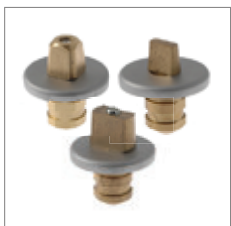
1022

Acciaio Inox / Stainless Steel



1027

Ottone / Brass



1730 - 1732 - 1735

Alluminio / Aluminium



1030

Alluminio / Aluminium



1040

Alluminio / Aluminium



1050

Alluminio / Aluminium



1060

Alluminio / Aluminium



1065

Alluminio / Aluminium



1070

Alluminio / Aluminium



1075

Alluminio / Aluminium



1510

Alluminio / Aluminium



1520

Alluminio / Aluminium



1522

Ottone / Brass



1527

Alluminio / Aluminium



1518

Alluminio / Aluminium



1528

Alluminio / Aluminium



1810

Alluminio / Aluminium



1820

Alluminio / Aluminium



1825



CHD1
Chiudiporta / Floor spring

1010

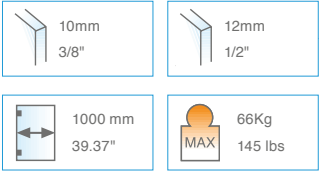
- Cerniera inferiore con quadro italiano a 57-67mm.
- Pernio inferior con cuadro italiano de 57-67mm.
- Bottom pivot patch with Italian pivot housing at 57-67mm.
- Unteres Band mit 57-67mm italienischer Gehäuse.
- Charnière inférieure avec cadre italien a 57-67mm.

1011

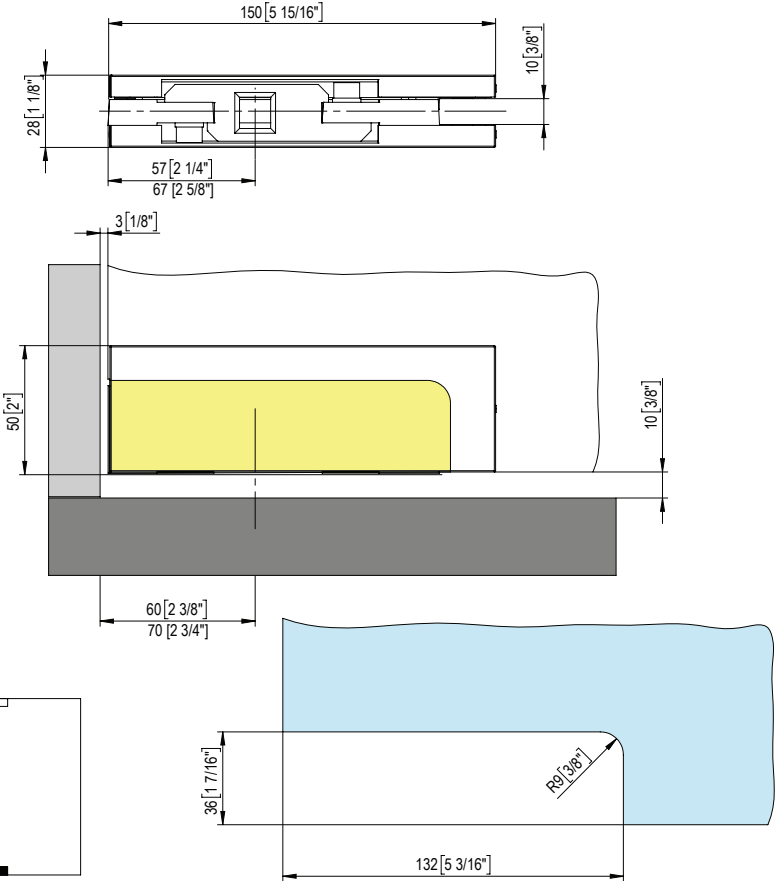
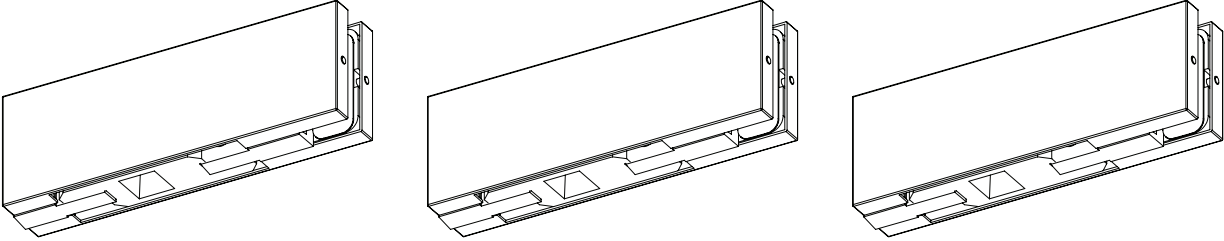
- Cerniera inferiore con tassello rettangolare tedesco.
- Pernio inferior con taco rectangular aleman de 57-67mm.
- Bottom pivot patch with German pivot at 57-67mm.
- Unteres Band mit 57-67mm deutscher Gehäuse.
- Charnière inférieure avec pièces rectangulaires allemandes.

1012

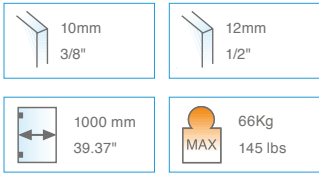
- Cerniera inferiore con tassello rettangolare spagnolo.
- Pernio inferior con taco rectangular español de 57-67mm.
- Bottom pivot patch with Spanish pivot at 57-67mm.
- Unteres Band mit 57-67mm spanischer Gehäuse.
- Charnière inférieure avec pièces rectangulaires espagnoles.



Da specificare all'ordine
Please specify in detail
when ordering

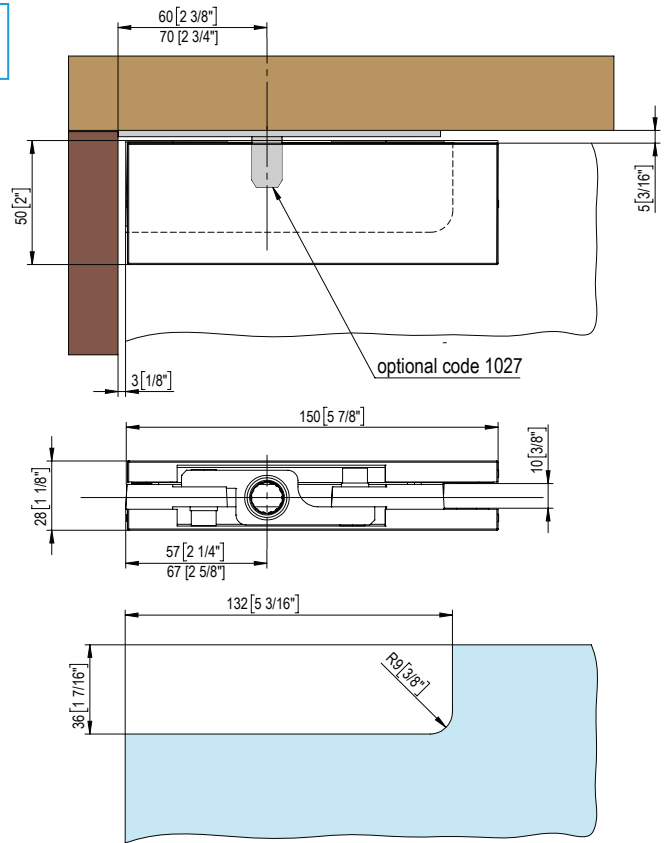
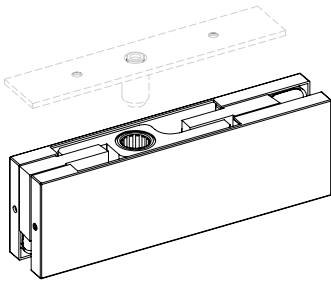


1020

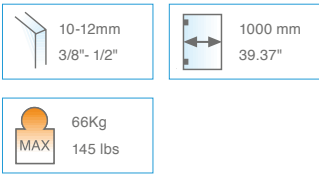


Da specificare all'ordine
Please specify in detail
when ordering

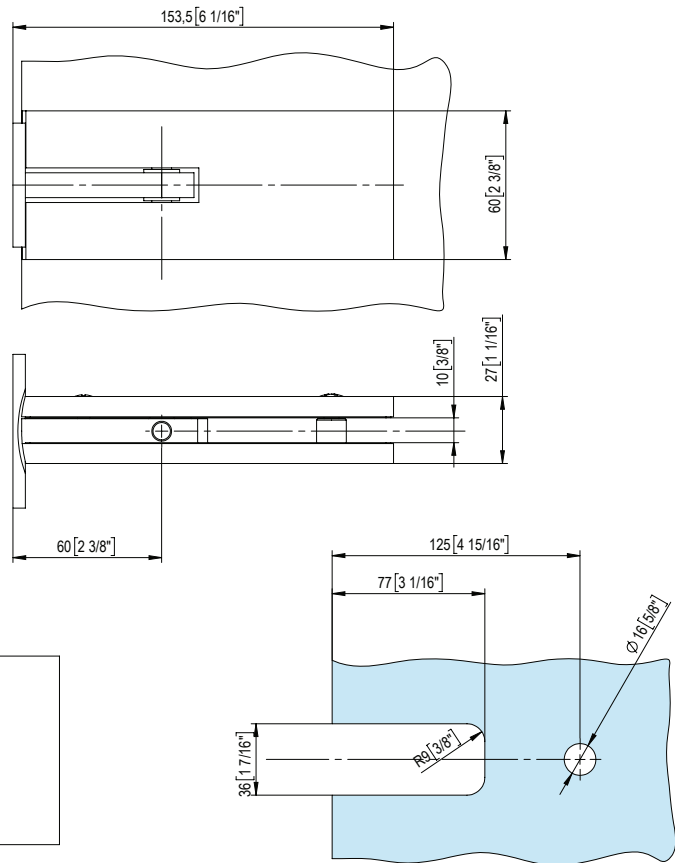
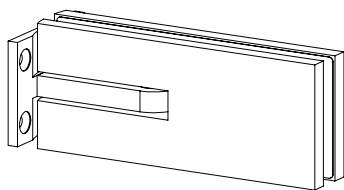
- Cerniera superiore cuscinetto a 57-67mm registrabile.
- Pernio superior de 57-67mm
- Top pivot patch with adjustable bearing bush at 57-67mm.
- Oberes Band mit 56-67mm vertellbarem Lager.
- Charnière supérieure 57-67mm réglable.



1022

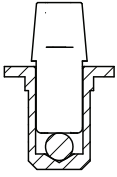
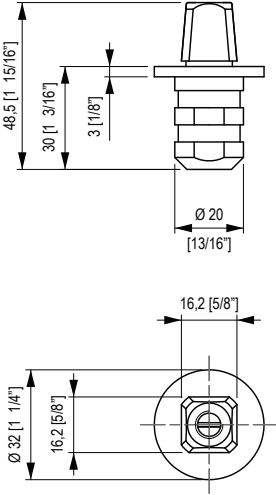
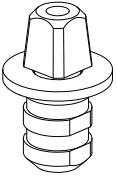


- Cerniera laterale per porte senza attacchi al soffitto, con perno a 57 mm. Abbinabile all'art.1010.
- Bisagra lateral por puerta sin enganche al techo. Con pernio a 57 mm. Se puede acoplar con art.1010.
- Side hinge for doors without ceiling fixings, with pivot pin at 57 mm. Combined to item.1010.
- Seitliches Band für Türen ohne Decke- festigungen, mit Zapfen 57 mm. Mit Art.1010 kombinierbar.
- Charnière latérale pour porte sans attaches au plafond, avec goupille de 57 mm. Combinable avec l'art.1010.



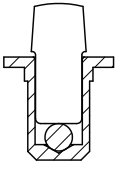
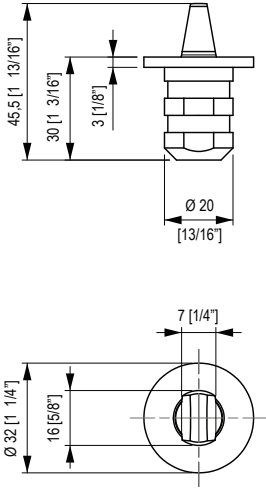
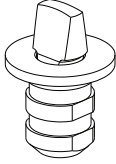
1730

- Piletta per cerniera. Quadro italiano.
- Punto de giro inferior con cuadro italiano.
- Bottom pin for hinges with Italian pivot housing.
- Unterer Zapfen für Band. Italienscher Gehäuse.
- Axe de pivot Italien.



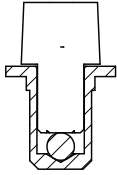
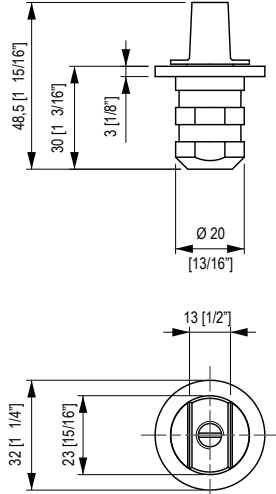
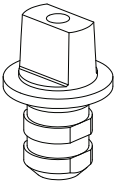
1732

- Piletta per cerniera. Quadro spagnolo.
- Punto de giro inferior cuadro Español.
- Bottom pin for hinges with Spanish pivot housing.
- Unterer Zapfen für Band. Spanischer Gehäuse.
- Axe de pivot espagnol.



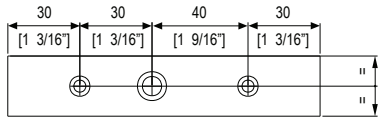
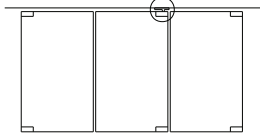
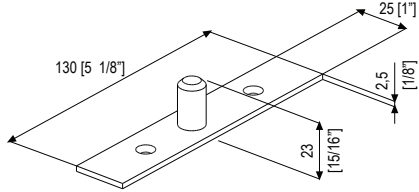
1735

- Piletta per cerniera. Quadro tedesco.
- Punto de giro inferior para bisagra con cuadro Aleman.
- Bottom pin for hinges with German pivot housing.
- Unterer Zapfen für Band. Deutscher Gehäuse.
- Axe de pivot allemand.

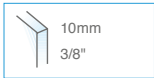


1027

- Piletta a soffitto per 1020-1820.
- Punto de giro superior para art.1020-1820.
- Top pin for 1020-1820.
- Deckezapfen für 1020-1820.
- Broche supérieure pour 1020-1820.

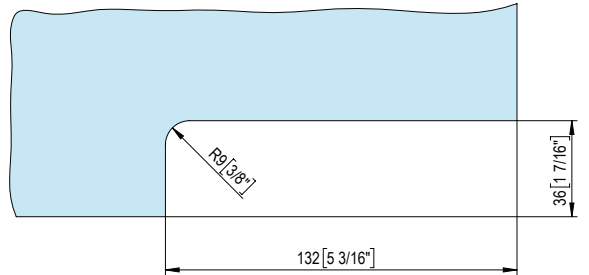
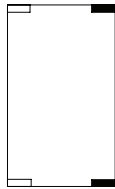
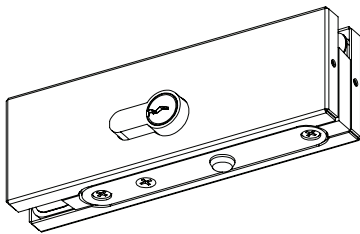
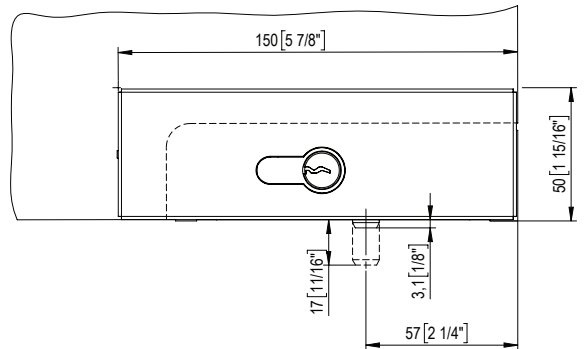
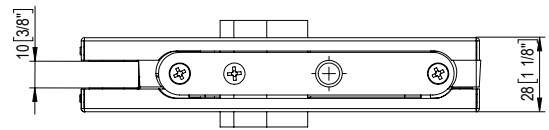
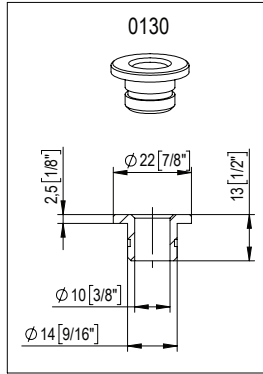


1030



Da specificare all'ordine
Please specify in detail
when ordering

- Serratura stesse dimensioni della 1010 - 1020.
- Cerradura inferior: misma dimensión de 1010-1020.
- Corner lock. Same size and cut as 1010-1020.
- Schloss mit den selben Maßen von 1010-1020.
- Serrure. Mêmes dimensions et coupes que 1010 - 1020.

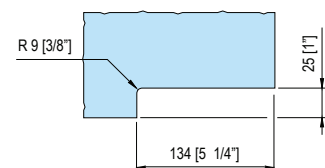
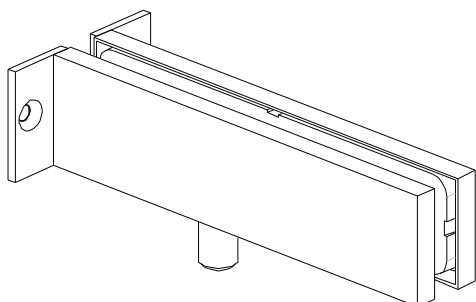
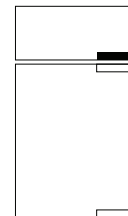
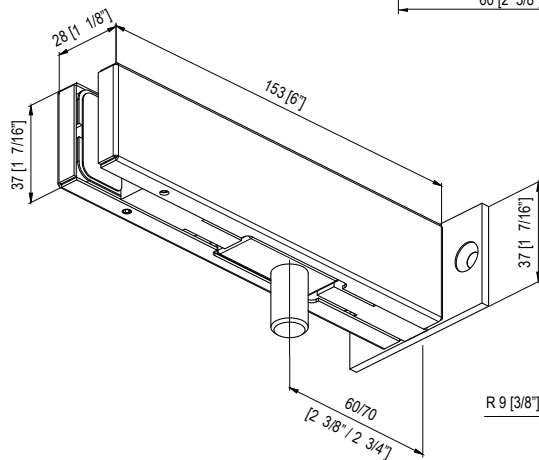
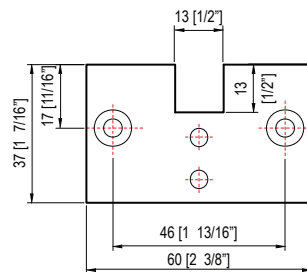


1040

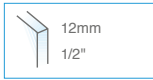
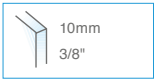


Da specificare all'ordine
Please specify in detail
when ordering

- Attacco sopra luce - muro per 1020.
- Enganche de giro montante - pared para art.1020.
- Transom to wall link fitting for 1020.
- Kupplung Oberlichtfenster-Wand für 1020.
- Fixation sous imposte- mur pour 1020.

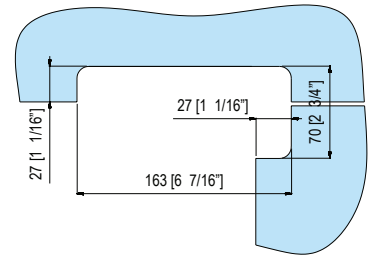
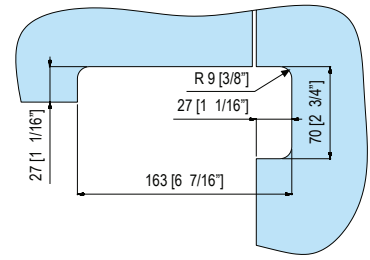
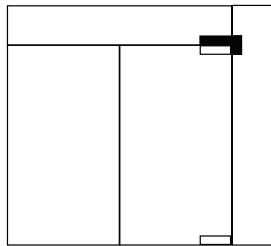
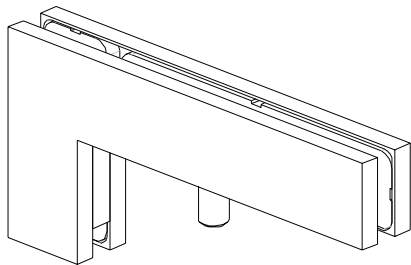


1050



Da specificare all'ordine
Please specify in detail
when ordering

- Attacco sopra-luce-vello laterale per art.1020.
- Punto de giro montante lateral - vidrio fijo, para art. 1020.
- Transom to fixed side panel link fitting for 1020.
- Kupplung Oberlichtfenster-Seiten-teil für 1020.
- Fixation sous imposte - verre latéral pour art.1020.

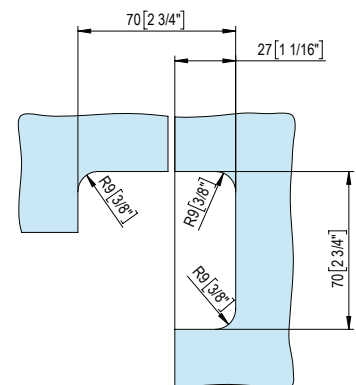
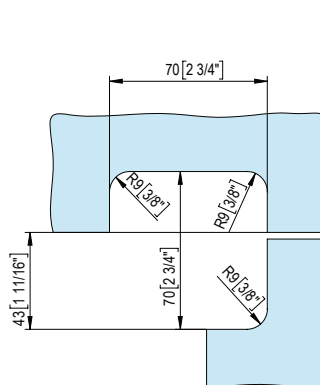
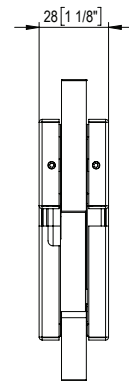
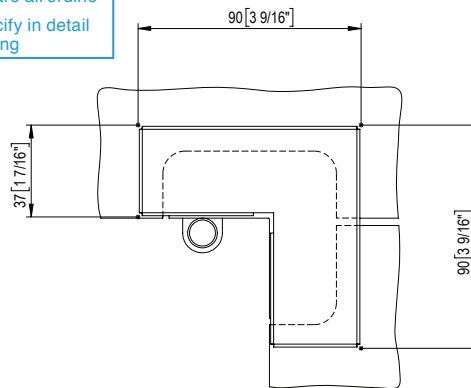
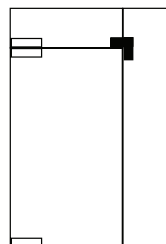
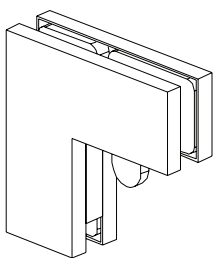


1060

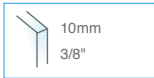


Da specificare all'ordine
Please specify in detail
when ordering

- Attacco piccolo sopra-luce-vello fisso laterale con battuta.
- Unión tres lunas con tope.
- Small link fitting for transom to side panel with stop.
- Kleine Kupplung Oberlichtfenster-Seitenteil. Mit Anschlag.
- Petite fixation sous imposte - verre fixe latéral avec butée.

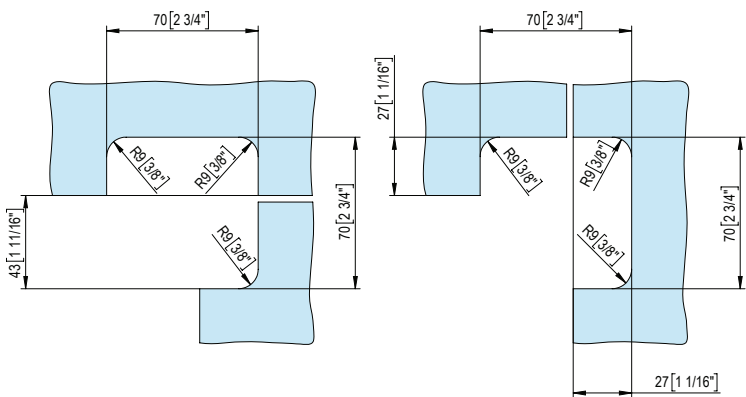
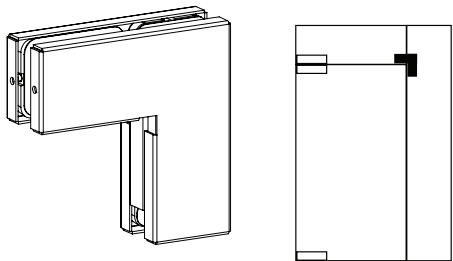
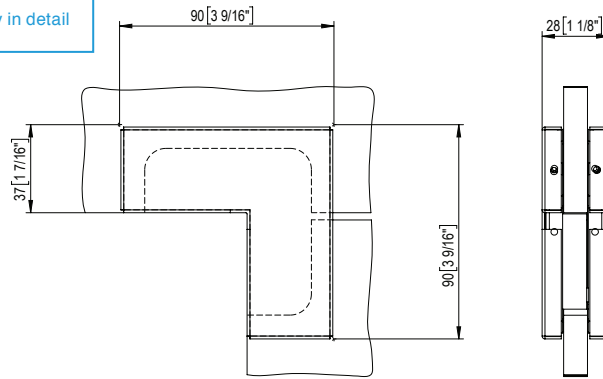


1065



Da specificare all'ordine
Please specify in detail
when ordering

- Attacco piccolo sopra-luce-vello fisso laterale senza battuta.
- Unión tres lunas sin tope.
- Small link fitting for transom to side panel without stop.
- Kleine Kupplung Oberlichtfenster-Seitenteil. Ohne Anschlag.
- Petite fixation sous imposte - verre fixe latéral sans butée.

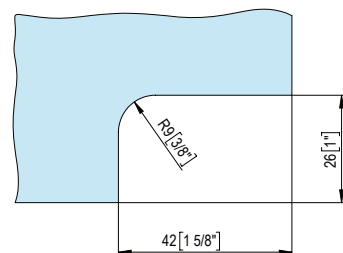
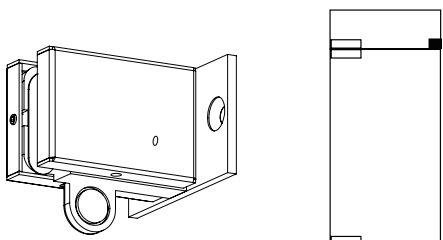
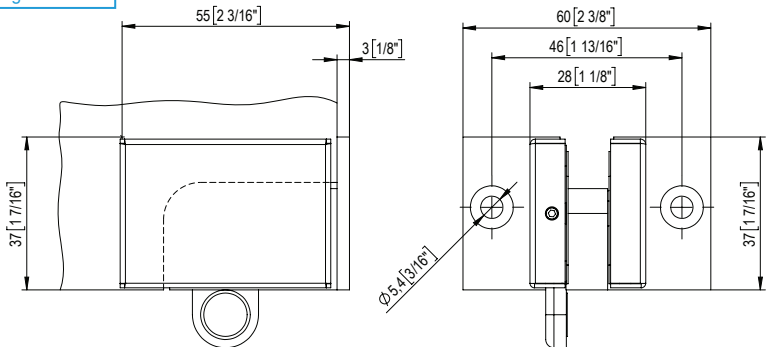


1070

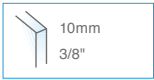


Da specificare all'ordine
Please specify in detail
when ordering

- Attacco piccolo sopra-luce-muro con battuta.
- Unión una luna con tope.
- Small link fitting for transom to side panel with stop.
- Kleine Kupplung Oberlichtfenster-Wand. Mit Anschlag.
- Petite fixation sous imposte - verre fixe latéral sans butée.

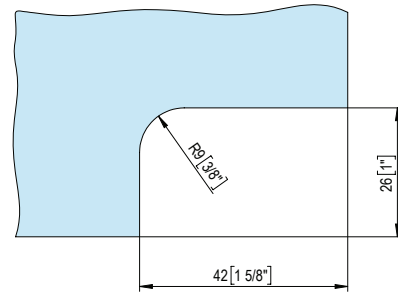
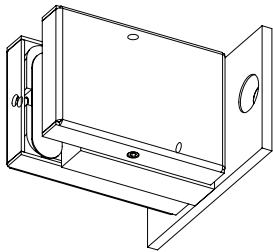
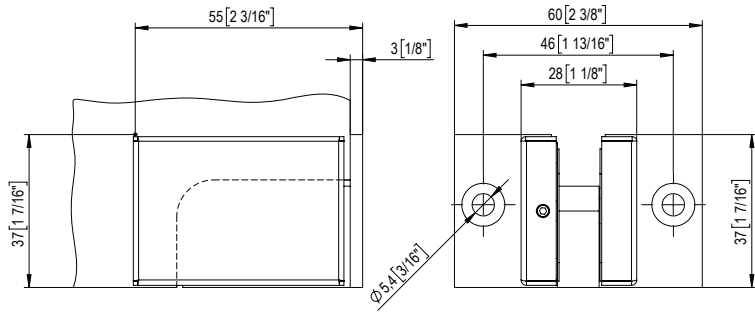


1075



Da specificare all'ordine
Please specify in detail
when ordering

- Attacco piccolo sopra-luce-muro senza battuta.
- Unión una luna sin tope.
- Small link fitting for transom to wall without stop.
- Kleine Kupplung Oberlichtfenster-Wand. Ohne Anschlag.
- Petite fixation sous imposte- mur sans butée.



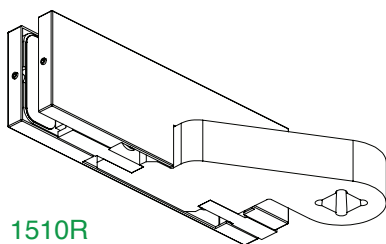
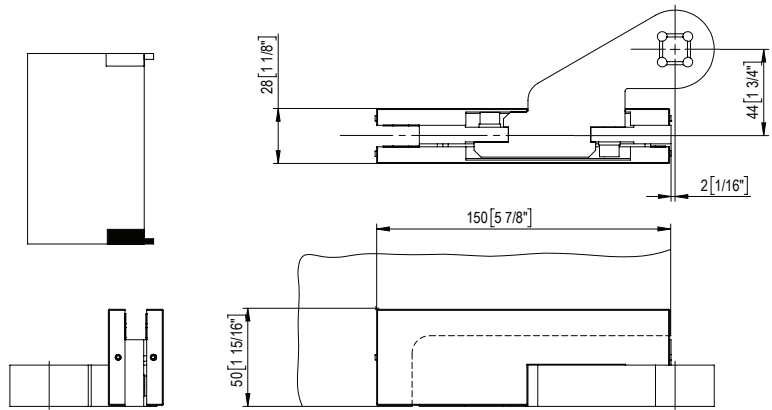
1510

1510R = destra - derecha - right - rechts - droite
1510L = sinistra - izquierda - left - links - gauche

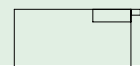
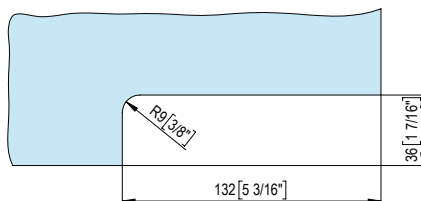


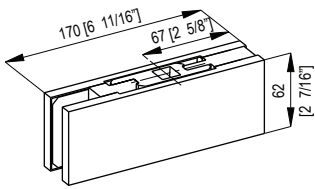
Da specificare all'ordine
Please specify in detail
when ordering

- Cerniera inferiore con perno spostato(DX-SX).
- Pernio inferior con eje desplazado (DCH. - IZQ.).
- Bottom offset pivot patch. (right - left).
- Unteres Band mit seitlich angeschlagenem Zapfen. (rechts - links).
- Penture basse à axe déporté(DR-G)

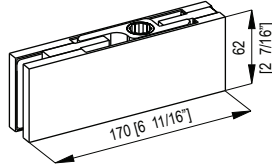


1510R





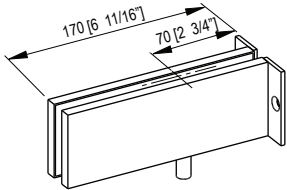
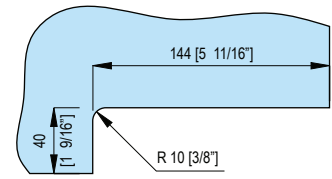
1X10/13 (13,52mm)
1X10/17 (17,52mm)



1X20/13 (13,52mm)
1X20/17 (17,52mm)

1000 mm
39.37" *

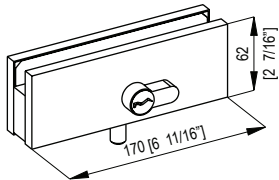
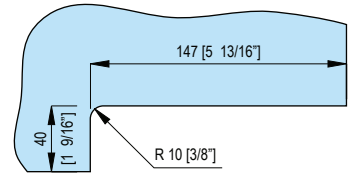
100Kg
220 lbs
MAX



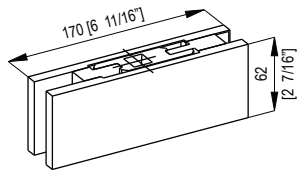
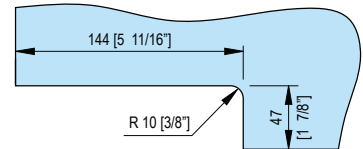
1X40/13 (13,52mm)
1X40/17 (17,52mm)

1000 mm
39.37" *

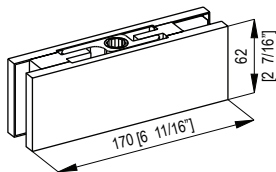
100Kg
220 lbs
MAX



1X30/13 (13,52mm)
1X30/17 (17,52mm)



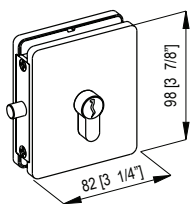
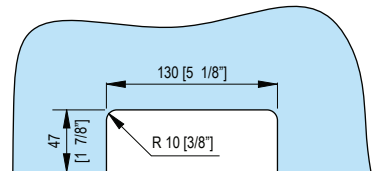
1X81/13 (13,52mm)
1X81/17 (17,52mm)



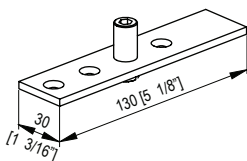
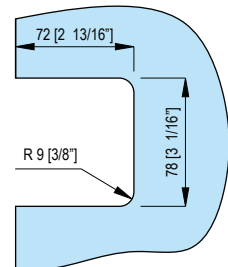
1X82/13 (13,52mm)
1X82/17 (17,52mm)

1000 mm
39.37" *

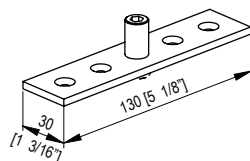
120Kg
264 lbs
MAX



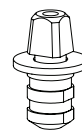
6X30/13 (13,52mm)
6X30/17 (17,52mm)



1X27



1X28



1X73

120Kg
264 lbs
MAX

* Per dimensioni e pesi superiori contattare il nostro ufficio tecnico - Para mayores dimensiones y pesos, póngase en contacto con nuestra oficina técnica - For bigger dimensions and higher weights please get through to our technical department - Für größere Maßen und stärkeres Gewicht setzen sie sich bitte mit unserem technischen Büro in Kontakt - Pour les dimensions et poids plus élevés, veuillez contacter notre service technique